



# Company Overview

# Who is Sisgeo ...



Sisgeo is **world leader** for manufacturing  
geotechnical instrumentation

Sisgeo produces a **complete range** of instruments  
for structural and underground monitoring

Around the world Sisgeo has designed and installed  
**monitoring systems** for building, tunnel and dam projects

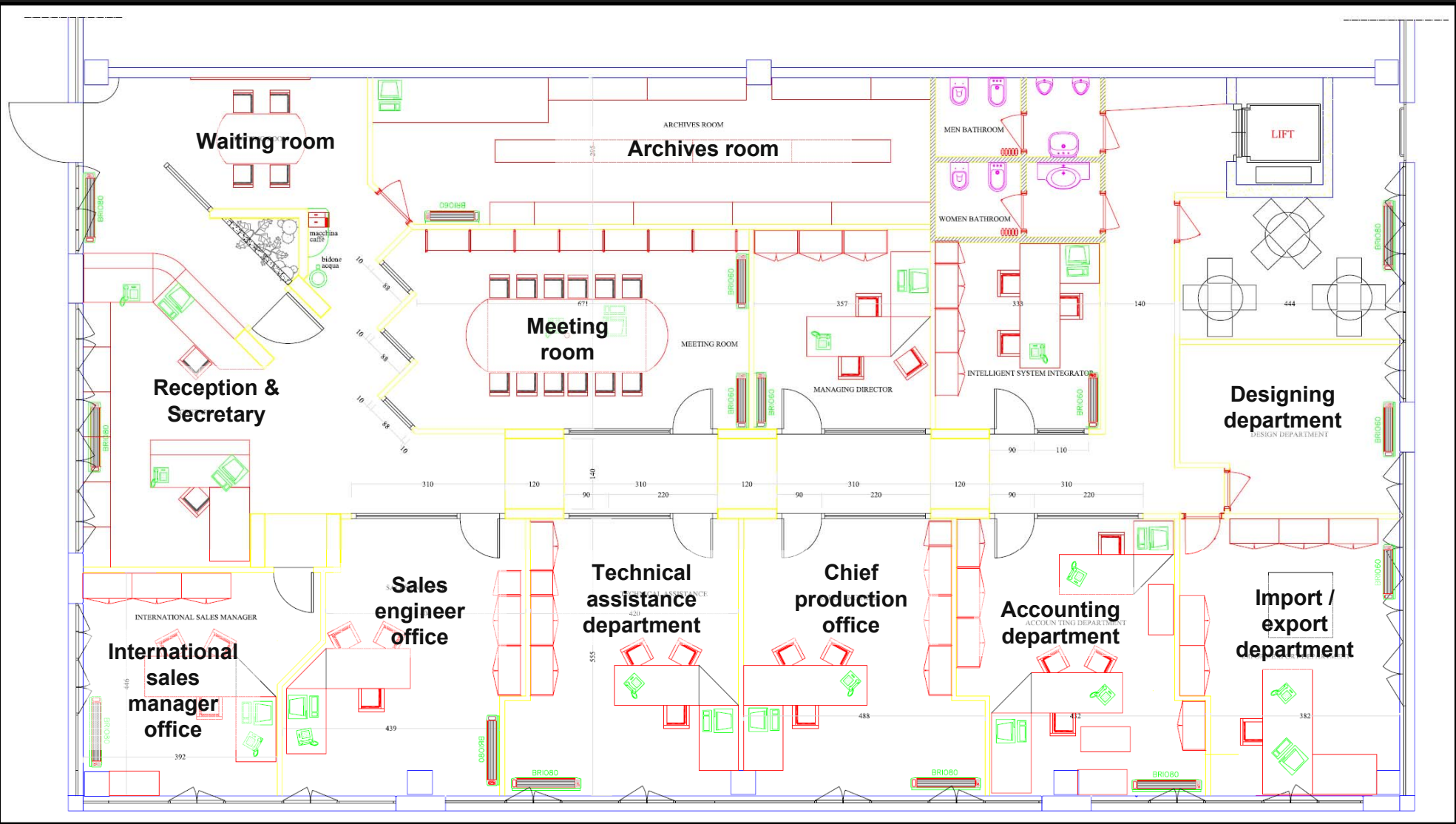
Since 1997 Sisgeo has a certified **Quality System**  
in compliance with UNI EN ISO 9001-2008 standards

Sisgeo also provides **technical assistance** for  
instrument installation and maintenance

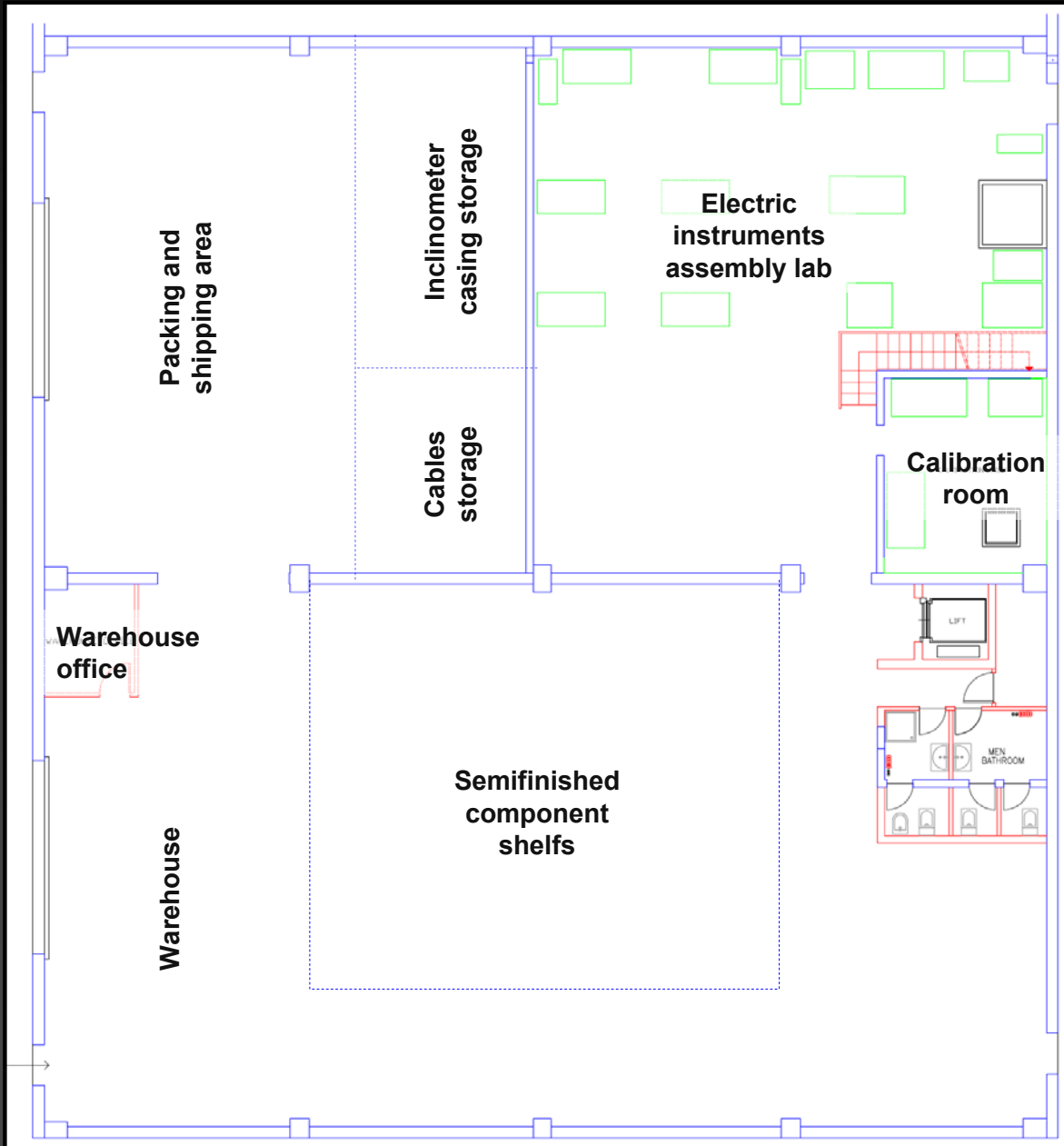
# First floor plant



## 500 sqm of Advanced Networking Offices



# Basement production floor plan



Assembly lab  
and calibration room:  
**450 sqm**

Semifinished  
component shelves:  
**400 sqm**

Packing and  
shipping area:  
**350 sqm**

Warehouse:  
**300 sqm**

# Network features



- **No.3 servers** that works together with **redundant** power supply and networking cabling
- **$1.5 \times 10^6$  MB** of storage memory (1.5 TB)
  - **GIGAbit** LAN technology (1.000/10.000)
- **No.40 computers** connected
  - **Wi-Fi LAN** available also for host people



# Offices area



**Reception and  
Secretary**



**Meeting  
room**

# Production Area



**Assembly Lab**



**Vacuum machine for  
pressure cells**

# Production Area



**Pressure transducer  
calibration desk**



**Inclinometer calibration  
machine**

# Warehouse Area

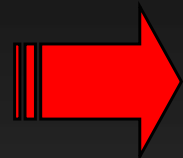


**Semifinished component  
shelves**

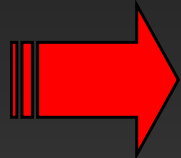


**Cables storage**

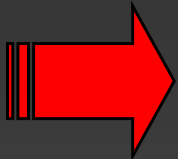
# Main field of activities



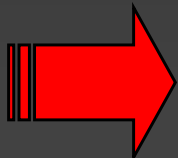
**Concrete and Earth Dams**



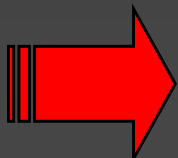
**Tunnel and Underground works**



**Landslides**



**Railway and Motorway**



**Building and Civil Structures**